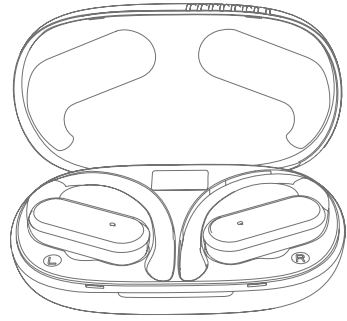


GLIDE

TRUE WIRELESS EARBUDS



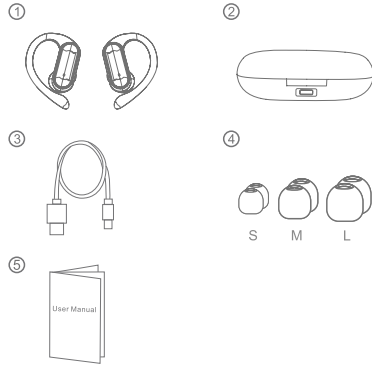
Model: MyBat Pro Glide
User Manual

WELCOME

Thank you for using the MyBat Pro Glide True Wireless Earbuds. Get ready to glide to the rhythm like never before as you effortlessly soar through seamless harmonies and captivating soundscapes. Designed with ergonomic precision and a wire-free experience, these earbuds empower you to rise to new musical heights, pushing boundaries and unleashing an exhilarating surge of energy with every note.

Please read this user manual carefully and keep it for future reference.

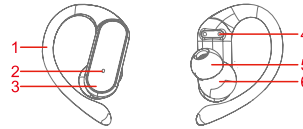
PACKAGE CONTENTS



1. Glide True Wireless Earbuds
2. Charging Case With LED Power Display
3. USB-C Charging Cable
4. Ear Caps (3X)
5. User Manual

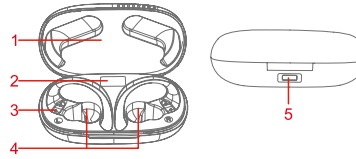
PRODUCT OVERVIEW

Earbuds



1. Earhook
2. LED Indicator & Microphone
3. Smart Touch Control
4. Charging Contact
5. Earcap
6. Speaker

Charging Case

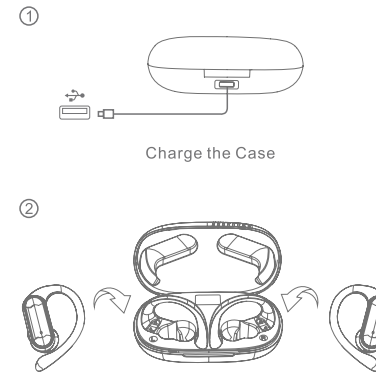


1. Cover
2. LED Power Display
3. Charging Pins
4. Earbud Charging Slot
5. USB-C Charging Port

HOW TO CHARGE

Fully charge the earbuds before first use.

Note: The earbuds take approximately one hour for a full charge, while the charging case takes 2 hours.



1. Connect the USB-A plug to a charger with a 5W power output and insert the USB-C plug into the charging port.
2. Charging will begin once the earbuds are placed inside the case.

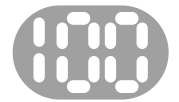
CHARGING CASE DISPLAY

The LED display will show the charging case's battery level whenever the earbuds are placed into the case or while the charging cable is connected.



Charging

During this time, the numbers will steadily flash.



Fully Charged

Once the percentage reaches 100.

POWERING ON/OFF

Power On:

Auto Power On: The earbuds automatically power on when removed from the charging case.

Manual Power On: Press and hold the touch control button on the earbuds for 3 seconds.

- Auto Power On
- Manual Power On



⌚: Press and hold for 2s

Power Off:

Auto Power Off: The earbuds automatically power off when placed back in the charging case.

Manual Power Off: Press and hold the touch control button on the earbuds for 5 seconds.

- Auto Power Off
- Manual Power Off

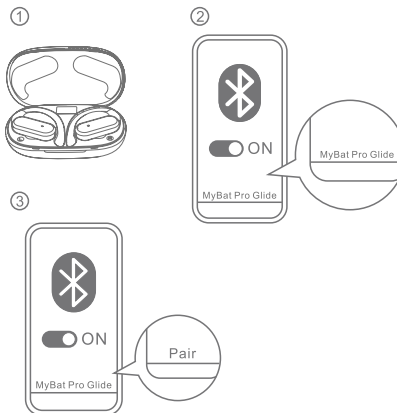


⌚: Press and hold for 3s

HOW TO PAIR

1. Open the charging case and remove the earbuds. The earbuds will automatically power on and enter pairing mode.
2. Ensure your device's Bluetooth setting is turned on.
3. Choose "MyBat Pro Glide" from the list of found Bluetooth devices and click pair.

NOTE: Once turned on, the earbuds will automatically connect to your last paired device if it is within the Bluetooth range.



AUDIO CONTROLS

Play / Pause	Tap Once (L/R Earbud)
Previous Track	Tap 3X (L Earbud)
Next Track	Tap 3X (R Earbud)
Volume-	Tap 2X (L Earbud)
Volume+	Tap 2X (R Earbud)

CALL CONTROLS

Answer / End a Call	Tap Once (L/R Earbud)
Reject a Call	Tap & Hold For 2s (L/R Earbud)

VOICE CONTROLS

Activate Siri & Other Assistants	Tap & Hold For 2s (L/R Earbud)
----------------------------------	--------------------------------

SPECIFICATIONS

Model: MyBat Pro Glide
Input: DC 5V/500mA
Rated Output Power: 5mW
Battery: 40mAh x2 (Earbuds), 400mAh (Charging Case)
Charge Time: 1 Hour (Earbuds), 2 Hours (Charging Case)
Play Time: ~8 Hours (60% Volume)
Driver Size: 13mm Diamond Coated
Frequency Response: 20Hz ~ 20kHz
Impedance: 32Ω
Bluetooth Version: 5.3
Bluetooth Range: 10m/33ft
Bluetooth Frequency: 2402MHz - 2480MHz
Bluetooth Profile: AVRCP, A2DP, HFP, HSP
Audio Codec Format: SBC, AAC, aptX

IMPORTANT SAFETY INSTRUCTIONS

To avoid hearing damage, limit the time you use headphones at high volume and set the volume to a safe level. The louder the volume, the shorter the safe listening time is. Be sure to observe the following guidelines when using your earpieces.

- Listen at reasonable volumes for reasonable periods of time.
- Be careful not to adjust the volume continuously upwards as your hearing adapts.
- Do not turn up the volume so high that you can't hear what's around you.
- You should use caution or temporarily discontinue use in potentially hazardous situations.
- Excessive sound pressure from earphones and headphones can cause hearing loss.
- Using headphones with both ears covered while driving is not recommended and may be illegal in some areas while driving.
- For your safety, avoid distractions from music or phone calls while in traffic or other potentially dangerous environments.

FCC STATEMENT

This equipment has been tested and found to comply with the limits for a Class B digital device, pursuant to Part 15 of the FCC Rules. These limits are designed to provide reasonable protection against harmful interference in a residential installation. This equipment generates and can radiate radio frequency energy and, if not installed and used in accordance with these instructions, may cause harmful interference to radio communications. However, there is no guarantee that interference will not occur in a particular installation. If this equipment does cause harmful interference to radio or television reception, which can be determined by turning the equipment off and on, the user is encouraged to try to correct the interference by one or more of the following measures:

- Reorient or relocate the receiving antenna.
- Increase the separation between the equipment and receiver.
- Connect the equipment into an outlet on a circuit different from that to which the receiver is connected.
- Consult the dealer or experienced radio/TV technician for help.

This device complies with Part 15 of the FCC Rules. Operation is subject to the following two conditions:

- (1) This device may not cause harmful interference and
- (2) this device must not accept any interference received, including interference that may cause undesired operation.

Changes or modifications not expressly approved by the party responsible for compliance could void the user's authority to operate the equipment.

WARNING: Cancer and Reproductive Harm
www.P65Warnings.ca.gov
 Made in China

