



# ACCELERATE

BLUETOOTH SPORTS NECKBAND EARBUDS



User Manual

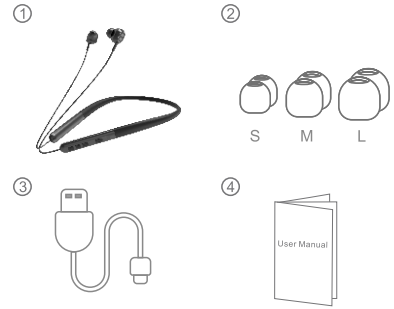
Model: MyBat Pro Accelerate

## WELCOME

Thank you for using the MyBat Pro Accelerate Bluetooth Sports Neckband Earbuds. Feel the rush of unparalleled performance as you dive into the seamless harmony of captivating sound quality and ergonomic design. With their sleek and wireless construction, these earbuds empower you to reach new heights, pushing boundaries and igniting a surge of energy throughout your workout.

Please read this user manual carefully and keep it for future reference.

## PACKAGE CONTENTS



1. Accelerate Bluetooth Sports Neckband Earbuds
2. Ear Caps (3X)(The M earcap is installed on the earphones)
3. USB-C Charging Cable
4. User Manual

## PRODUCT OVERVIEW

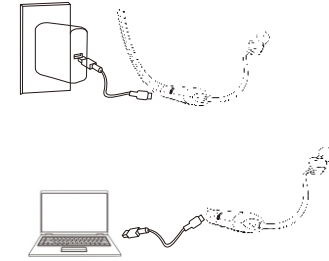


1. Earbud
2. Ear Cap
3. Power ON / OFF
4. Charging Port
5. Volume + / Next Track
6. Play / Pause
7. LED Indicator
8. Volume - / Previous Track
9. Built-In Microphone

## HOW TO CHARGE

Fully charge the Accelerate before first use.

Note: It takes approximately one hour for a full charge.



Connect the USB-A plug to a charger with a 5W power output, and insert the USB-C plug into the charging port.

## LED INDICATORS

	Steady red	Charging
	LED OFF	Fully charged

## POWER ON/OFF

**Power On:**  
Press & Hold the Power button for 3 seconds.

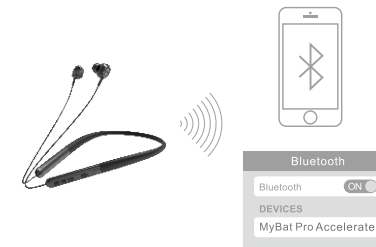
**Power Off:**  
Press & Hold the Power button for 6 seconds.

NOTE: After five minutes of inactivity or if there is no connection, the earbuds will automatically turn off.

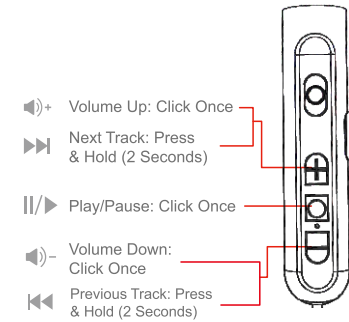
## BLUETOOTH PAIRING

1. Press and hold the Power button for 3 seconds to turn on the headphones.
2. Ensure your device's Bluetooth setting is turned on.
3. Choose "MyBat Pro Accelerate" from the list of found Bluetooth devices and click pair. The LED Indicator will flash blue once connected.

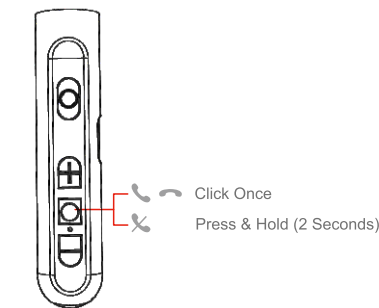
NOTE: Once turned on, the earbuds will automatically connect to your last paired device if it is within the Bluetooth range.



## MUSIC CONTROLS



## CALL CONTROLS



## SPECIFICATIONS

Model	MyBat Pro Accelerate
Type	Sports Neckband Earbuds
Bluetooth Version	5.3
Bluetooth Frequency	20HZ-20kHz
Bluetooth Profile	AVRCP, A2DP, HFP, HSP
Bluetooth Range	10 Meters (33 Feet)
Noise Ratio	≥85DB
Distortion	0.1%
Battery	200mAh Lithium Polymer Battery
Charging Voltage	DC 5V
Charge Time	~1.5 - 2 Hours
Play Time	~18 Hours (60% volume)
Talk Time	~12 Hours (60% volume)

Waterproof	IPX5
Product weight	37g

## IMPORTANT

To avoid hearing damage, limit the time you use headphones at high volume and set the volume to a safe level. The louder the volume, the shorter the safe listening time is.

Be sure to observe the following guidelines when using your headphones:

- Listen at reasonable volumes for reasonable periods.
- Be careful not to adjust the volume continuously upwards as your hearing adapts.
- Do not turn up the volume so high that you can't hear what's around you.
- You should use caution or temporarily discontinue use in potentially hazardous situations.
- Excessive sound pressure from earphones and headphones can cause hearing loss.
- Using headphones with both ears covered while driving is not recommended and may be illegal in some areas.
- For your safety, avoid distractions from music or phone calls in traffic or other potentially dangerous environments.

## FCC STATEMENT

This equipment has been tested and found to comply with the limits for a Class B digital device, pursuant to Part 15 of the FCC Rules. These limits are designed to provide reasonable protection against harmful interference in a residential installation. This equipment generates and can radiate radio frequency energy and, if not installed and used in accordance with these instructions, may cause harmful interference to radio communications. However, there is no guarantee that interference will not occur in a particular installation. If this equipment does cause harmful interference to radio or television reception, which can be determined by turning the equipment off and on, the user is encouraged to try to correct the interference by one or more of the following measures:

- Reorient or relocate the receiving antenna.
- Increase the separation between the equipment and receiver.
- Connect the equipment into an outlet on a circuit different from that to which the receiver is connected.
- Consult the dealer or experienced radio/TV technician for help.

This device complies with Part 15 of the FCC Rules. Operation is subject to the following two conditions:

- (1) This device may not cause harmful interference and
- (2) this device must not accept any interference received, including interference that may cause undesired operation.

Changes or modifications not expressly approved by the party responsible for compliance could void the user's authority to operate the equipment.

WARNING: Cancer and Reproductive Harm  
www.P65Warnings.ca.gov  
Made in China



SCAN QR CODE TO ACCESS LIFETIME WARRANTY



www.mybatpro.com