



PALM

Bluetooth Speaker



User Manual

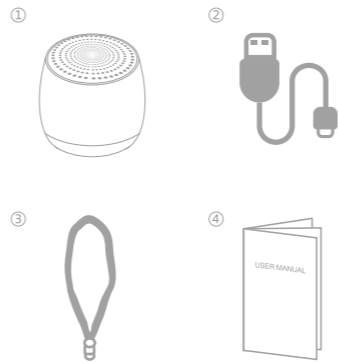
Model: MyBat Pro Palm

WELCOME

Thank you for using the MyBat Pro Palm Bluetooth Speaker. Small in size but mighty in sound, let the Pebble Bluetooth Speaker be your perfect on-the-go companion, delivering smooth and natural audio wherever you wander.

Please read this user manual carefully and keep it for future reference.

WHAT'S IN THE BOX



- 1. MyBat Pro Palm Bluetooth Speaker x 1
- 2. Charging Cable x 1
- 3. Lanyard x 1
- 4. User Manual x 1

PRODUCT OVERVIEW



- 1. Speaker
- 2. Lanyard Hole
- 3. Indicator Light
- 4. Charging Port
- 5. Microphone
- 6. Micro SD Card Slot
- 7. Volume Up / Next Track
- 8. Power ON/OFF, Play/Pause, Answer/End Call, Switch Mode
- 9. Volume Down / Previous Track

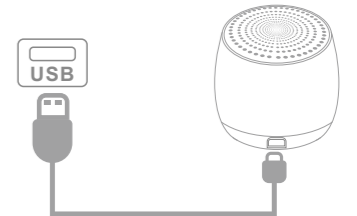
CONTROL PANEL

- Power On/Off:** Press & hold
- Play/Pause:** Click 1X (While Playing Music)
- Answer/End Call:** Click 1X (During Incoming Call/On Call)
- Switch Mode:** Click 2X. Switches between Bluetooth, FM Radio and Micro SD play modes.
- Search Stations (While in FM Play):** Click 1X to start/end the search.
- Volume Up:** Press & hold to increase the volume.
- Next Track:** Click 1X to switch to the next song.
- Volume Down:** Press & hold to decrease the volume.
- Previous Track:** Click 1X to return to previous song.

HOW TO CHARGE

Fully charge the Palm before first use.
NOTE: It takes approximately 2 hours for a full charge.

Connect the USB-A plug to a charger with a 5W power output, and insert the Micro USB plug into the charging port.



POWER ON / OFF

- 1. Power on: Press and hold "Power On" button for 3 seconds, the speaker will be turned on, and a voice prompt of "Power on" will be issued.
- 2. Power off: Press and hold "Power On" button for 3 seconds, the speaker will be turned off, and a voice prompt of "Power off" will be issued.

BLUETOOTH PAIRING

- 1. Turn on the speaker. Press and hold "Power On" button for 3 seconds, the earbuds will be turned on.
- 2. Ensure your device's Bluetooth setting is turned on.
- 3. Search for devices and click "MyBat Pro Palm" to pair the speaker to your device.
- 4. In subsequent use, as long as the Bluetooth of the mobile device is turned on, it can automatically connect.



MUSIC FUNCTION

- Play / Pause**
- Volume Up / Next Track**
- Volume Down / Previous Track**

CALL FUNCTION

- Answer / Hang Up**

SPECIFICATIONS

Model	MyBat Pro Palm
Loudspeaker Output	3W
Horn Size	40mm

Bluetooth Version	V5.3
Bluetooth Range	10~30m / 33~100ft
Frequency Response Range	20Hz - 20KHz
Signal Noise Rate	≥90DB
Battery Capacity/Voltage	500mAh / 3.7V
Battery Charge Time	2 Hours
Working Time	5 Hours
USB Power Input	5V / 300mA

SAFETY MEASURES

To ensure proper use of this product, please take the time to read this instruction manual carefully before use. Please observe all the instructions about safe operation and please keep this instruction manual in a safe place for future reference.

- 1. Protection of power supply wire: Do not place the cable in the path of foot traffic. Do not place heavy furniture on the cable. Never pull the cable to unplug the unit from the socket, always disconnect the unit from the main power supply by pulling the plug out of the socket.
- 2. Ventilation: In order to prevent this unit from overheating, place it in a well-ventilated area on a stable surface. Never place it on a bed, sofa or carpet where the ventilation will be restricted.
- 3. Dismantling: In order to avoid the risk of electric shock, do not dismantle the unit. Should your unit be faulty or broken please refer servicing to an authorized service center.
- 4. Strange Odor: Should the speaker emit any strange odor, immediately unplug it from the wall socket. Do not use the unit again until you have had it repaired or contacted the manufacturer.
- 5. Do not expose this unit to liquid of any kind.

FCC STATEMENT

This equipment has been tested and found to comply with the limits for a Class B digital device, pursuant to Part 15 of the FCC Rules. These limits are designed to provide reasonable protection against harmful interference in a residential installation. This equipment generates uses and can radiate radiofrequency energy and, if not installed and used in accordance with the instructions, may cause harmful interference to radio communications. However, there is no guarantee that interference will not occur in a particular installation. If this equipment does cause harmful interference to radio or television reception, which can be determined by turning the equipment off and on, the user is encouraged to try to correct the interference by one or more of the following measures:
-Reorient or relocate the receiving antenna.
-Increase the separation between the equipment and receiver.
-Connect the equipment into an outlet on a circuit different from that to which the receiver is connected.
-Consult the dealer or an experienced radio/TV technician for help.

This device complies with part 15 of the FCC Rules. Operation is subject to the following two conditions:
(1) This device may not cause harmful interference, and
(2) this device must accept any interference received, including interference that may cause undesired operation.
Changes or modifications not expressly approved by the party responsible for compliance could void the user's authority to operate the equipment.

WARNING: Cancer and Reproductive Harm
www.P65Warnings.ca.gov
Made in China



www.mybatpro.com