



## Epiphany Bluetooth Headphones



### User Manual

Model: MyBat Pro Epiphany

#### WELCOME

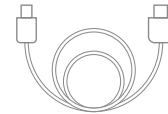
Thank you for using the MyBat Pro Epiphany Bluetooth Headphones. Discover the next level of style and sound in an over-ear design that offers a natural, noise-free listening experience.

Please read this user manual carefully and keep it for future reference.

#### PACKAGE INCLUDES



Epiphany  
Bluetooth Headphones



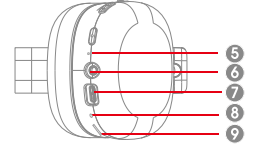
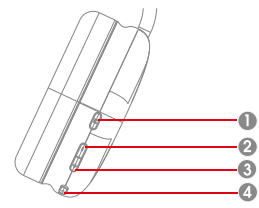
USB-C  
Charging Cable



User Manual

1. Epiphany Bluetooth Headphones
2. USB-C Charging Cable
3. User Manual

#### PRODUCT OVERVIEW

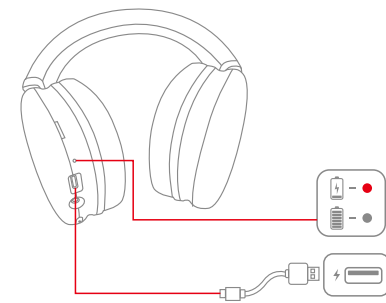


1. Mode Button
2. Volume Down / Previous Track
3. Volume Up / Next Track
4. Multi-Function Button (MFB): Power ON/OFF, Play/Pause, Answer/Hang Up
5. LED Indicator
6. 3.5mm Auxiliary Input
7. USB-C Charging Port
8. Built-In Microphone
9. Micro SD Slot

#### HOW TO CHARGE

Fully charge the Epiphany before first use.

**NOTE:** It takes approximately two hours for a full charge.



Connect the USB-A plug to a charger with a 5W power output, and insert the USB-C plug into the charging port.

	Steady red	Charging
	LED OFF	Fully charged

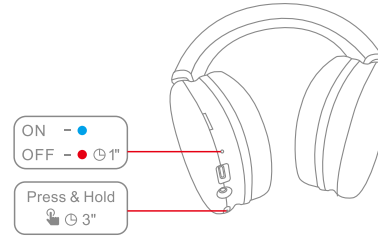
#### POWER ON/OFF

**Power On:**  
Press & Hold the MFB button for 3 seconds.

The LED indicator will light up blue and turn off after 3 seconds.

**Power Off:**  
Press & Hold the MFB button for 3 seconds.

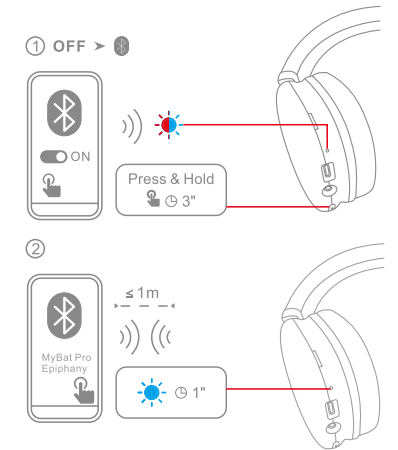
The LED indicator will light up red and turn off after 1 second.



**NOTE:** After three minutes of inactivity or if there is no connection, the headphones will automatically turn off.

#### BLUETOOTH PAIRING

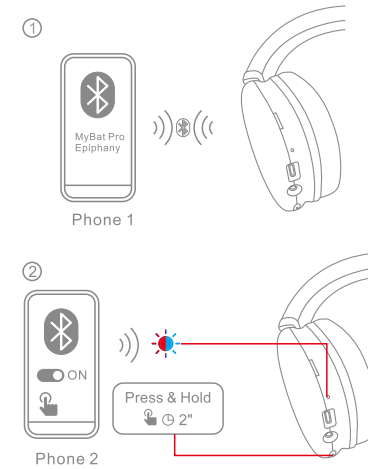
1. Press and hold the MFB button for 3 seconds to turn on the headphones. The LED indicator light will alternately flash red and blue as the headphones enter the pairing mode.
2. Ensure your device's Bluetooth setting is turned on.
3. Choose "MyBat Pro Epiphany" from the list of found Bluetooth devices and click pair. The LED Indicator will flash blue once connected.



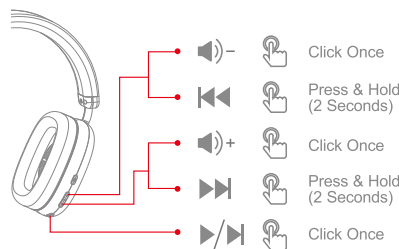
**NOTE:** Once turned on, the headphones will automatically connect to your last paired device if it is within the Bluetooth range.

#### DUAL-DEVICE CONNECTION

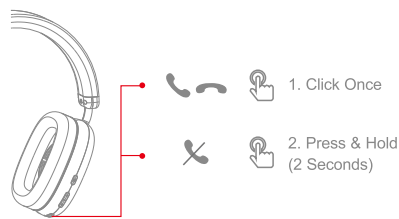
1. Follow instructions to pair the first device as noted above. Once connected, turn off the Bluetooth for the first device.
2. The headphones will then go into Bluetooth pairing mode. Check that the LED Indicator is flashing blue & red alternately.
3. Turn the Bluetooth setting on the second device, and search for "MyBat Pro Epiphany" from the list to connect. The LED Indicator will flash blue once connected.
4. Turn on the Bluetooth settings on the first device and reconnect with "MyBat Pro Epiphany." Both devices should now be paired.



#### MUSIC CONTROLS



#### CALL CONTROLS



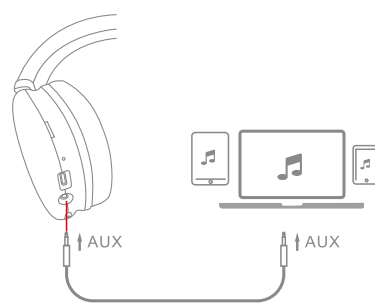
#### AUX-IN PLAY

Wired listening is possible when the headphones are powered off or out of power with the 3.5mm audio cable.

Bluetooth and button functions are disabled in Aux-In Play mode.

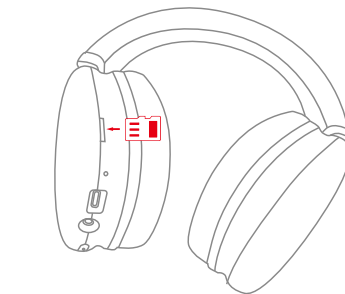
If the headphones are paired via Bluetooth, you will hear a voice prompt "power off" when inserting the 3.5mm cable. The headset will then automatically shut down and enter Aux-In Play.

**NOTE:** If you want to use Bluetooth, please unplug the 3.5mm auxiliary audio cable and reset the headphones.



#### MICRO SD CARD PLAY

1. Insert the Micro SD card into the headphones, and the device will automatically play the music stored on it.
2. Using Micro SD Play mode, you can only listen to the music on the card and cannot make phone calls.
3. Click the Mode button to switch between Bluetooth and Micro SD Play modes.



#### SPECIFICATIONS

Bluetooth Version:	5.3
Operation Frequency:	2.402-2.480GHz
Supported Formats:	HFP, A2DP, AVRCP
Bluetooth Range:	10m/33ft
Play Time:	~25 Hours (60% volume)
Talk Time:	~15 Hours (60% volume)
Battery:	400mAh Lithium Polymer Battery
Charge time:	~2 Hours
Driver Diameter:	40mm
Rated Impedance:	32Ω ± 15%
Frequency Range:	20-20kHz
Sensitivity:	119± 3dB
Product Size:	195 * 172 * 75 mm
Product Weight:	192g

#### IMPORTANT

To avoid hearing damage, limit the time you use headphones at high volume and set the volume to a safe level. The louder the volume, the shorter the safe listening time is.

Be sure to observe the following guidelines when using your headphones:

- Listen at reasonable volumes for reasonable periods.
- Be careful not to adjust the volume continuously upwards as your hearing adapts.
- Do not turn up the volume so high that you can't hear what's around you.
- You should use caution or temporarily discontinue use in potentially hazardous situations.
- Excessive sound pressure from earphones and headphones can cause hearing loss.
- Using headphones with both ears covered while driving is not recommended and may be illegal in some areas.
- For your safety, avoid distractions from music or phone calls in traffic or other potentially dangerous environments.

#### FCC STATEMENT

This equipment has been tested and found to comply with the limits for a Class B digital device, pursuant to Part 15 of the FCC Rules. These limits are designed to provide reasonable protection against harmful interference in a residential installation. This equipment generates and can radiate radio frequency energy and, if not installed and used in accordance with these instructions, may cause harmful interference to radio communications. However, there is no guarantee that interference will not occur in a particular installation. If this equipment does cause harmful interference to radio or television reception, which can be determined by turning the equipment off and on, the user is encouraged to try to correct the interference by one or more of the following measures:

- Reorient or relocate the receiving antenna.
- Increase the separation between the equipment and receiver.
- Connect the equipment into an outlet on a circuit different from that to which the receiver is connected.
- Consult the dealer or experienced radio/TV technician for help.

This device complies with Part 15 of the FCC Rules. Operation is subject to the following two conditions:

- (1) This device may not cause harmful interference and
- (2) this device must not accept any interference received, including interference that may cause undesired operation.

Changes or modifications not expressly approved by the party responsible for compliance could void the user's authority to operate the equipment.

⚠WARNING: Cancer and Reproductive Harm  
www.P65Warnings.ca.gov

Made in China

CE FCC RoHS

www.mybatpro.com

Scan QR code to  
access the user  
manual

