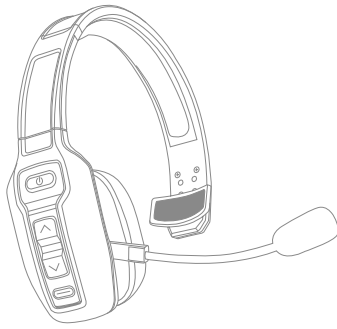




# WorkFlow Bluetooth Headset



## User Manual

Model: MyBat Pro WorkFlow

### WELCOME

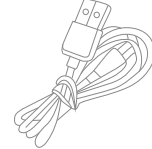
Thank you for using the MyBat Pro WorkFlow Bluetooth Headset. Say goodbye to disruptive distractions and hello to crystal clear calls no matter where you are -- in an office, in the car, or even at home.

Please read this user manual carefully and keep it for future reference.

### PACKAGE CONTENTS



WorkFlow Bluetooth Headset



USB-C Charging Cable



User Manual

User Manual

### PRODUCT OVERVIEW

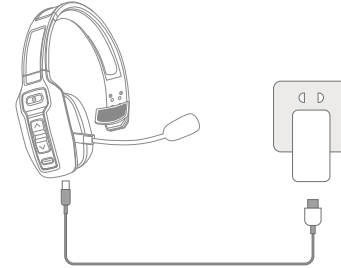


1. Multi-Function Button (MFB) / LED Indicator
2. Volume Up / Next Track
3. Volume Down / Previous Track
4. Mute Button
5. USB-C Charging Port
6. Noise-Cancelling Microphone

### HOW TO CHARGE

Fully charge the WorkFlow before first use.

**NOTE:** It takes approximately two hours for a full charge.



Charge with USB-C Cable (\*Adapter Sold Separately)

**Note:** Charge the WorkFlow at least once every two months when not in use.

### POWER ON/OFF

**Power On:**  
Press & Hold the MFB button for 3 seconds.

The LED indicator will light up blue and turn off after 3 seconds.

**Power Off:**  
Press & Hold the MFB button for 3 seconds.

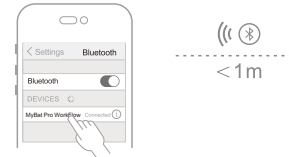
The LED indicator will light up red and turn off after 1 second.

### BLUETOOTH PAIRING

1. Press and hold the MFB button for 5 to 8 seconds to turn on the headset. Press the MFB button twice if the device is powered on but not connected. The LED indicator light will alternately flash red and blue as the headphones enter the pairing mode.

2. Ensure your device's Bluetooth setting is turned on.

3. Choose "MyBat Pro WorkFlow" from the list of found Bluetooth devices and click pair. The LED Indicator will flash blue once connected.



### DUAL-DEVICE CONNECTION

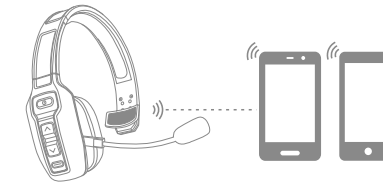
1. Follow instructions to pair the first device as noted above. Once connected, turn off the Bluetooth for the first device.

2. Press the MFB button twice to return to Bluetooth pairing mode. Check that the LED Indicator is flashing blue & red alternately.

3. Turn the Bluetooth setting on the second device, and search for "MyBat Pro WorkFlow" from the list to connect. The LED Indicator will flash blue once connected.

4. Turn on the Bluetooth settings on the first device and reconnect with "MyBat Pro WorkFlow." Both devices should now be paired.

**NOTE:** Music can only be played from one device, regardless of how many devices are connected. As a result, if you would like to play music from the secondary device, the music app and function must be stopped from the first device. The same applies to calls.



### CONTROLS

Button	Function	Instruction
MFB	Power On	Press & Hold (5-7 seconds)
	Power Off	Press & Hold (5 seconds)
	Pairing Mode	Press & Hold (5-7 Seconds, While Powered Off / Press 2X If Powered On & Not Connected)
	Play / Pause	Press 1X (While Playing Music)
	Redial Call	Press 2X (After Call)
	Switch Between Audio & Calls	Press & Hold (1 Second)
	Answer Call	Press 1X (During Incoming Call)
	Hang Up	Press 1X (During Call)
	Reject Call	Press 1X (For 1 Second, During Incoming Call)
Volume +	Volume Up	Press 1X
	Next Track	Press & Hold (For 1 Second, While Playing Music)
Volume -	Volume Down	Press 1X
	Previous Track	Press & Hold (For 1 Second, While Playing Music)
Mute Button	Microphone Mute	Press 1X (During Call, You will Hear A Voice Prompt Of "Mute On/Off")

### LED INDICATORS

Mode	LED Indicator
Power On	LED Will Flash Blue 3X
Power Off	LED Will Be Red For 1 Second, Then Turn Off
Pairing Mode	LED Will Flash Red & Blue Alternately
Standby Mode (Connected)	LED Will Flash Blue Every 10 Seconds
Playing Music	LED Will Flash Twice Every 10 Seconds
Calling	LED Will Flash Blue Every 10 Seconds
Clear Pairing Records	LED Will Flash Red & Blue Once, At The Same Time
Charging	LED Will Be Solid Red
Full Charged	LED Will Be Solid Blue
Low Battery	LED Will Flash Red

### SPECIFICATIONS

Bluetooth Version:	5.3
Operation Frequency:	2.402-2.480GHz
Supported Formats:	HSP HFP A2DP AVRCP
Operation Range:	10m/33ft
Play Time:	~60 Hours (70% volume)
Talk Time:	~35 Hours (70% volume)
Battery:	400mAh Lithium Polymer Battery
Charge Time:	~2 Hours
Operating Temperature:	-10~55°C
Speaker Driver:	40mm
Rated Impedance:	32Ω ± 15%
Frequency Range:	50-50kHz
Sensitivity:	113± 3dB
Product Size:	193 * 157 * 54mm
Product Weight:	141g

### FAQs

**1. What Should I Do if It Fails To Reconnect To My Last Paired Device?**  
Once the WorkFlow has been successfully paired to your device once, it will reconnect whenever it is powered on. If the connection fails, please connect it manually by pressing and holding the MFB for 5-7 seconds to enter the pairing mode, followed by checking the Bluetooth list on your device to ensure the WorkFlow is present.

**2. How Do I Delete My Paired Devices?**  
In the Standby Mode (connected with no audio playing), press and hold the Volume + and MFB button at the same time for 5 seconds to clear your paired devices. The WorkFlow will not reconnect to any previously paired devices.

**3. My Device Is Asking For A Password To Pair. What Is It?**  
Some devices will require a password for pairing. If so, please try the following options: 0000, 8888, 1111, or 1234.

**4. How Do I Activate Siri & Other Voice Assistants?**  
Press and hold the MFB for 1 second while your device is connected.

**5. What Should I Do if I Have Connection Issues Or A Dead Battery?**  
If you are experiencing either situation, please reset the WorkFlow. Plug in the charging cable as it will reset the WorkFlow, and it will power off. Remove the charging cable, then press and hold the MFB button to power it on. If the situation persists, please reach out to us.

**6. Why Did The WorkFlow Power Off Automatically?**  
After 10 minutes of inactivity, no connection, or if the battery is low the WorkFlow will automatically power off.

### FCC STATEMENT

This equipment has been tested and found to comply with the limits for a Class B digital device, pursuant to Part 15 of the FCC Rules. These limits are designed to provide reasonable protection against harmful interference in a residential installation. This equipment generates and can radiate radio frequency energy and, if not installed and used in accordance with these instructions, may cause harmful interference to radio communications. However, there is no guarantee that interference will not occur in a particular installation. If this equipment does cause harmful interference to radio or television reception, which can be determined by turning the equipment off and on, the user is encouraged to try to correct the interference by one or more of the following measures:

- Reorient or relocate the receiving antenna.
- Increase the separation between the equipment and receiver.
- Connect the equipment into an outlet on a circuit different from that to which the receiver is connected.
- Consult the dealer or experienced radio/TV technician for help.

This device complies with Part 15 of the FCC Rules. Operation is subject to the following two conditions:

- (1) This device may not cause harmful interference and
- (2) this device must not accept any interference received, including interference that may cause undesired operation.

Changes or modifications not expressly approved by the party responsible for compliance could void the user's authority to operate the equipment.

**WARNING:** Cancer and Reproductive Harm  
www.P65Warnings.ca.gov  
Made in China



www.mybatpro.com

