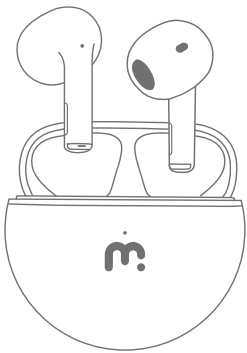




ORBIT TRUE WIRELESS EARBUDS

User Manual



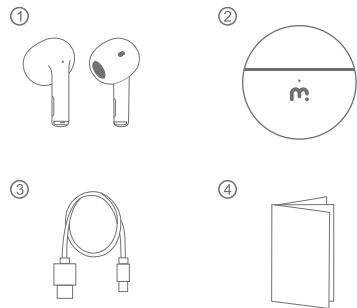
Model: MyBat Pro Orbit

WELCOME

Thank you for using the MyBat Pro Orbit True Wireless Earbuds. Feel the force of a seamless full-range audio experience that surrounds you with high-definition sound - all without wires!

Please read this user manual carefully and keep it for future reference.

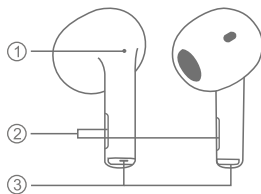
PACKAGE CONTENTS



1. Orbit True Wireless Earbuds
2. Charging Case
3. USB-C Charging Cable
4. User Manual

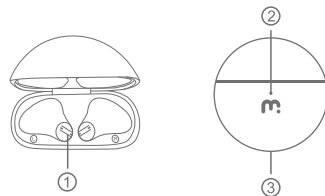
PRODUCT OVERVIEW

Earbuds



1. LED Indicator
2. Intelligent Touch Control
3. Charging Case Connector

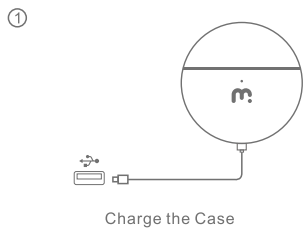
Charging Case



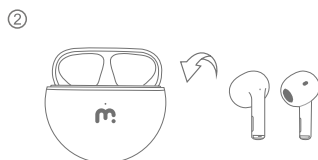
1. Charging Pins
2. LED Charging Indicator
3. USB-C Charging Port

HOW TO CHARGE

Fully charge your earbuds and case before first use.



Charge the Case



Charge the Earbuds

Charging Case

1. Connect the charging case to a power supply using the included USB-C charging cable.

Earbuds

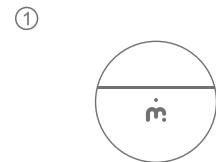
2. Place the earbuds in the charging case.

NOTE: Opening or closing the charging case activates the LED indicator. Ensure the earbuds and USB-C power are dry before charging.

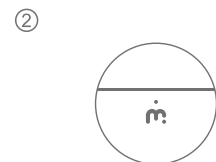
CHARGING CASE INDICATOR STATUS

Charging (Red Light Flashing)

Fully Charged (No Light)
The red light will turn off.



Charging
(Red Light Flashing)



Fully Charged
(No Light)

POWERING ON/OFF

Power On:

Open the charging case and remove the earbuds.

Power Off:

The earbuds will automatically turn off when placed in the charging case with the lid closed.

ON



OFF ①



②



NOTE: If there's no connection after 3 minutes, the earbuds will shut off.

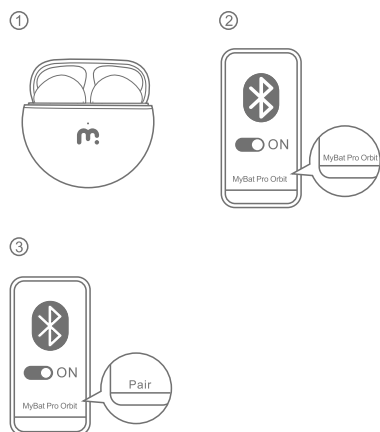
HOW TO PAIR

True Wireless Stereo Connection

The right earbud will automatically connect with the left earbud once the charging case is opened.

Pairing To Your Devices

1. Open the charging case. The earbuds will automatically power on and enter pairing mode.
2. Ensure your phone's Bluetooth settings are turned on.
3. Select "MyBat Pro Orbit" from the list of found devices and pair.



AUDIO CONTROLS

Play / Pause	Tap 1x (L/R)
Previous Track	Tap 3x (L)
Next Track	Tap 3x (R)

CALL CONTROLS

Answer / End call	Tap 1x (L/R)
Reject Call	Tap & Hold (L/R)(2 Secs)

VOICE CONTROLS

Activate Siri & Other Assistants	Tap 2x (L/R)
----------------------------------	--------------

SPECIFICATIONS

Input: DC 5V/500mA
Battery Capacity: 30mAh x 2 (Earbuds), 300mAh (Charging Case)
Playtime: Up to 4 Hours (Earbuds)
Charging Case: Up to an additional 20 Hours
Charging Time: 1 Hour (Earbuds), 2 Hours (Charging Case)
Bluetooth Version: 5.0
Bluetooth Range: 33ft/10m

Driver Size: 13mm
Frequency Response: 20Hz~20kHz
Impedance: 32Ω

IMPORTANT SAFETY INSTRUCTIONS

To avoid hearing damage, limit the time you use headphones at high volume and set the volume to a safe level.

Be sure to observe the following guidelines when using the earbuds:

1. Keep your listening volume at a reasonable level during extended playing.
2. Make sure to adjust the volume gradually as your hearing adapts.
3. Keep the volume at a level where you can hear your surroundings.
4. Use caution or discontinue use in hazardous conditions.
5. It is not recommended to drive with the earbuds in and could be illegal in some areas.
6. Avoid distractions from music or calls while in traffic or other potentially dangerous environments.

FCC STATEMENT

This equipment has been tested and found to comply with the limits for a Class B digital device, pursuant to Part 15 of the FCC Rules. These limits are designed to provide reasonable protection against harmful interference in a residential installation. This equipment generates and can radiate radio frequency energy and, if not installed

and used in accordance with these instructions, may cause harmful interference to radio communications. However, there is no guarantee that interference will not occur in a particular installation. If this equipment does cause harmful interference to radio or television reception, which

- Reorient or relocate the receiving antenna.
- Increase the separation between the equipment and receiver.
- Connect the equipment into an outlet on a circuit different from that to which the receiver is connected.
- Consult the dealer or experienced radio/TV technician for help.

This device complies with Part 15 of the FCC Rules. Operation is subject to the following two conditions:

- (1) This device may not cause harmful interference and
- (2) this device must not accept any interference received, including interference that may cause undesired operation.

Changes or modifications not expressly approved by the party responsible for compliance could void the user's authority to operate the equipment.

WARNING: Cancer and Reproductive Harm
www.P65Warnings.ca.gov
Made in China

