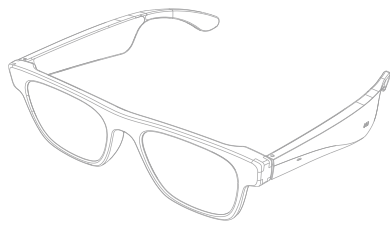




SPEX SMART AUDIO GLASSES



User Manual
Model: MyBat Pro Spex

IMPORTANT

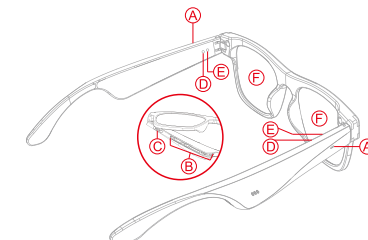
Thank you for using the MyBat Pro Spex Audio Glasses to take your sights and sounds to a whole new level. Please read the manual before use, as functions and settings are subject to change to provide the most optimal performance.

PACKAGE CONTENTS

- ① Spex Smart Audio Glasses
- ② Charging Cable
- ③ Glasses Case
- ④ Lens Cleaning Cloth
- ⑤ Carrying Pouch
- ⑥ User Manual



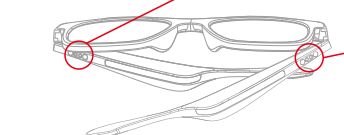
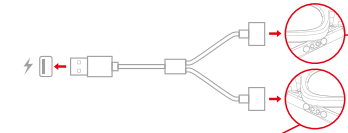
PRODUCT OVERVIEW



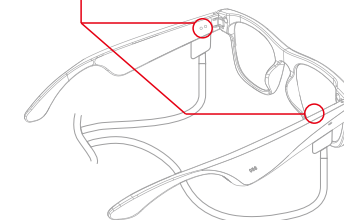
- A. Touch Controls
- B. Built-In Speakers
- C. Charging Ports
- D. LED Indicators
- E. Built-In Microphones
- F. Polarized Sunglasses Lenses

HOW TO CHARGE

Connect the charging cable to a USB power supply. Attach the pin connectors to the charging ports located at the bottom of the temple of the glasses. Fully charge the Glasses before first use.

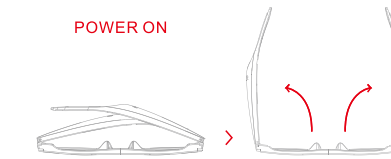


- Flashing Blue Light - Charging
- Light Off - Charging Complete (Approximately 1.5 Hours)



POWERING ON/OFF

Separate the temples of the glasses. You will hear a voice prompt of "Power On", the LED indicators will flash slowly.



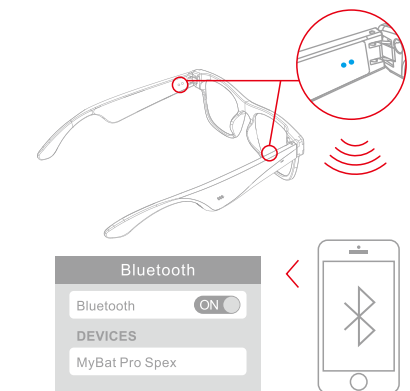
Close the temples of the glasses. You will hear a voice prompt of "Power Off", the LED indicators will flash for a second before turning off.



NOTE: If disconnected from a phone for 3 minutes, the glasses will automatically power off.

HOW TO PAIR

1. Open both temples to power on and enter pairing mode.
2. A voice prompt of "Pairing" will notify you that the glasses are searching for compatible Bluetooth devices, and the LED indicators will be rapidly flashing.
3. Ensure that your phone has Bluetooth turned on.
4. Choose "MyBat Pro Spex" from the list of found devices to pair. Once successfully connected, you will hear a voice prompt of "Connected".



NOTE: Once the glasses have been paired, they will automatically try to connect to the last paired mobile device. The glasses can only connect to one device at a time.

AUDIO CONTROLS

Play / Pause		Tap once (L/R)
Volume down		Tap 3 times (L)
Volume up		Tap 3 times (R)
Previous track		Tap twice (L)
Next track		Tap twice (R)

CALL CONTROLS

Answer a call		Tap once (L/R)
End a call		Tap once (L/R)
Reject a call		Tap twice (L/R)

VOICE CONTROLS

Activate Siri or other voice assistant		Tap and hold for 2 seconds (L/R)
--	--	----------------------------------

SPECIFICATIONS

Frame Material: ABS + Polycarbonate
 Lens Material: Polycarbonate
 Bluetooth Version: 5.1
 Charging Time: 1.5 Hours
 Call time: 6 hours (50% volume)
 Music Time: 6 hours (50% volume)
 Standby Time: 200 hours
 Battery Capacity: 120mAh*2
 Charging Current: DC5V, 80mA

IMPORTANT

1. After not using the device for an extended period, please charge before use.
2. Use the included cleaning cloth to wipe the lens. Do not wipe back and forth or in a circular motion.

WARNINGS

1. Before using, read all the safety information to ensure a proper and safe operation.
2. Only use the included charging cable. Other cables may cause fire, explosion, or other potential damages.
3. If you find this product rapidly increasing in temperature, emitting an odor, deformed, abraded, or demonstrating an abnormal phenomenon, please discontinue use.
4. Do not attempt to disassemble, modify or repair this product.

5. Do not directly connect the charging cable to a power supply if the pin connectors are not connecting to the temples. This may cause short-circuiting or other potential hazards.
6. When charging is complete, disconnect from the device. Do not exceed 12 hours of continuous charging time.
7. Do not expose the product to water or moisture.
8. Do not dispose of the product with other household waste to avoid battery fire or explosion.
9. For best disposal practices, please observe your local legal regulations.
10. This product contains a built-in non-removable lithium battery. Please avoid excessive bumps, falls, abrasions, or exposure to fire or open flames.
11. Maintain a manageable distance between magnetic components (glasses legs and charging cable) and metal objects to avoid the risk of short-circuiting and overheating.
12. Do not expose to direct sunlight for long durations to avoid corrosion or deformation.
13. Only use the product in compliance with relevant laws and regulations, do not use in any prohibited environments.

FCC STATEMENT

This equipment has been tested and found to comply with the limits for a Class B digital device, pursuant to Part 15 of the FCC Rules. These limits are designed to provide reasonable protection against harmful interference in a residential installation. This equipment generates uses and can radiate radiofrequency energy and, if not installed and used in accordance with the instructions, may cause harmful interference to radio communications. However, there is no guarantee that interference will not occur in a particular installation. If this equipment does cause harmful interference to radio or television reception, which can be determined by turning the equipment off and on, the user is encouraged to try to correct the interference by one or more of the following measures:

- Reorient or relocate the receiving antenna.
- Increase the separation between the equipment and receiver.
- Connect the equipment into an outlet on a circuit different from that to which the receiver is connected.
- Consult the dealer or an experienced radio/TV technician for help.

This device complies with part 15 of the FCC Rules. Operation is subject to the following two conditions:
 (1) This device may not cause harmful interference, and
 (2) This device must accept any interference received, including interference that may cause undesired operation.
 Changes or modifications not expressly approved by the party responsible for compliance could void the user's authority to operate the equipment.

WARNING: Cancer and Reproductive Harm
www.P65Warnings.ca.gov
 Made in China

CE FCC

www.mybatpro.com